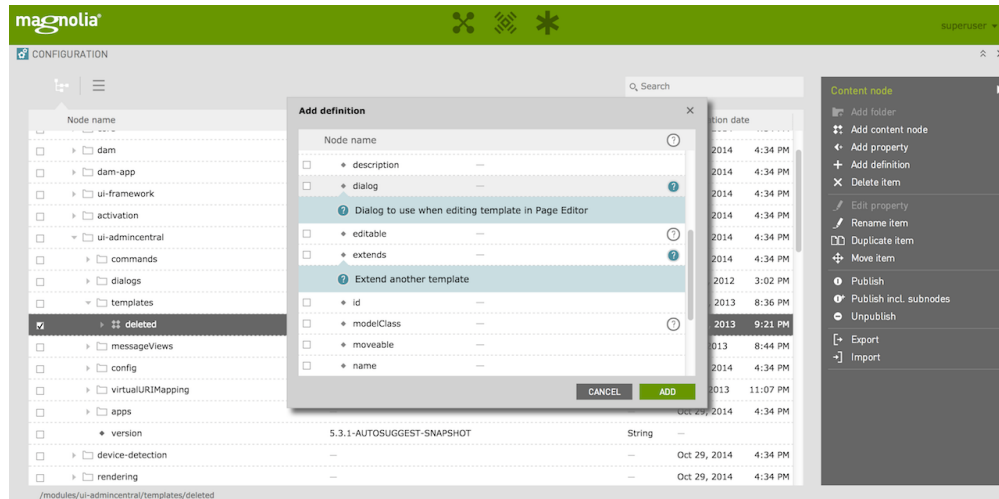


Concept - Help System for Configuration Tree

- [Introduction](#)
- [Try It](#)
- [Feature Overview](#)
- [Questions](#)

Introduction



Try It

- Try a prototype following these [instructions](#)

Feature Overview

- Allow help text to be attached to nodes and properties
- Help text should be easy to attach without editing the code
- Help text should support i18n
- Help text can be displayed when creating nodes and properties
- This help text system can also be available in all content apps

Questions

- [?](#) What is best way to display help text in the tree view? Ideally it can be inline and multiple can be displayed at the same time.