



WebDAV: Windows Vista Client Setup Instructions

This document provides instructions to set up WebDAV for Classes*v2 - Yale's Course Management System on a computer with the Windows Vista operating system.

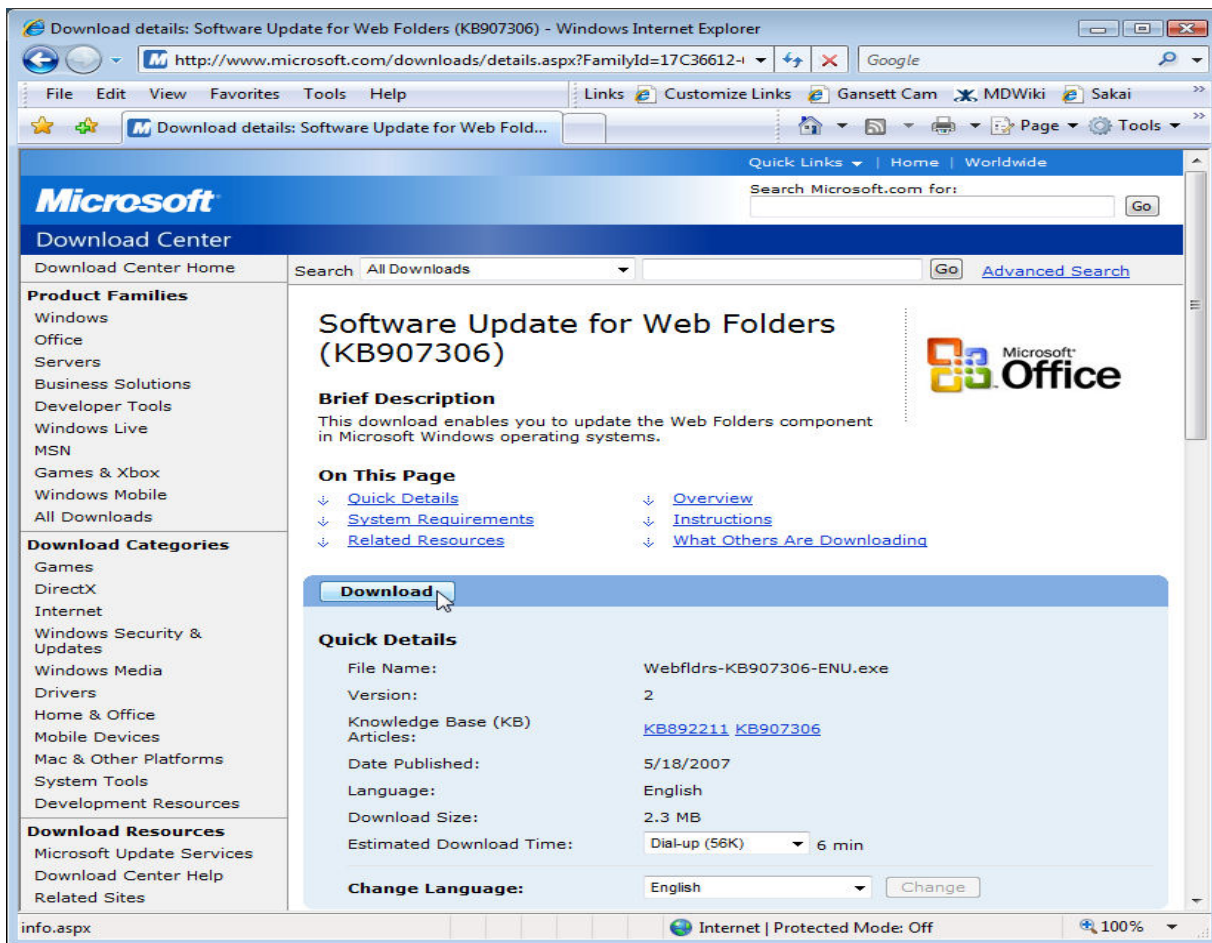
WebDAV is a method of viewing all of your files in a Classes*v2 course so that you may easily manage them using drag and drop.

Preliminaries

First, your computer must have Microsoft's Software Update for Web Folders (KB907306) installed in order for WebDAV to function properly with Vista. If you have not already done so, install this update as follows:

- 1) Visit - <http://www.microsoft.com/downloads/details.aspx?FamilyId=17C36612-632E-4C04-9382-987622ED1D64>.

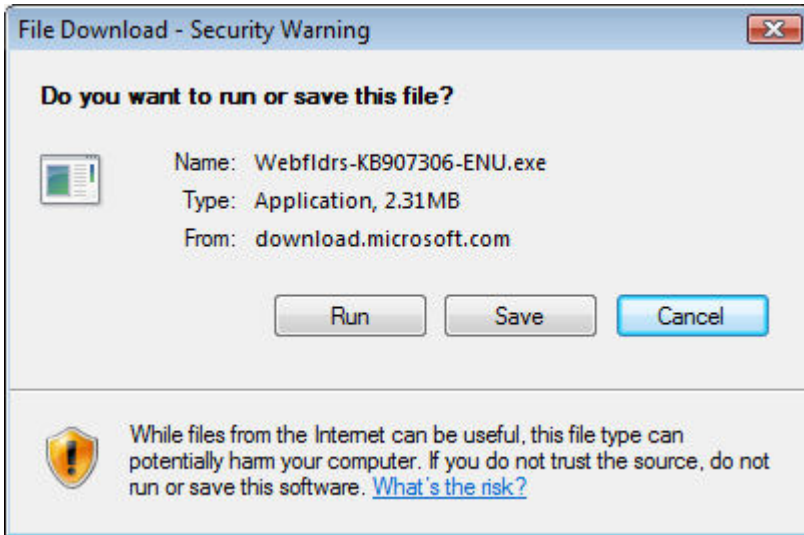
You should see the following page:



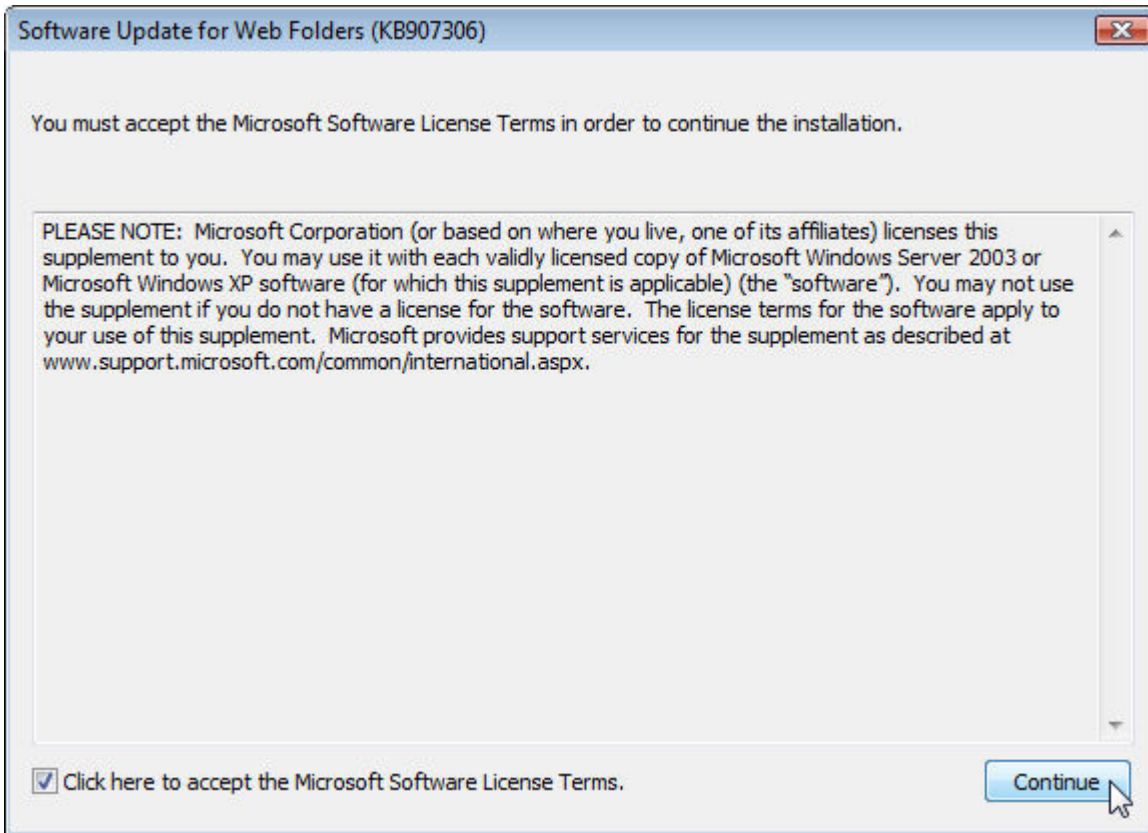
2. Press the Download button.



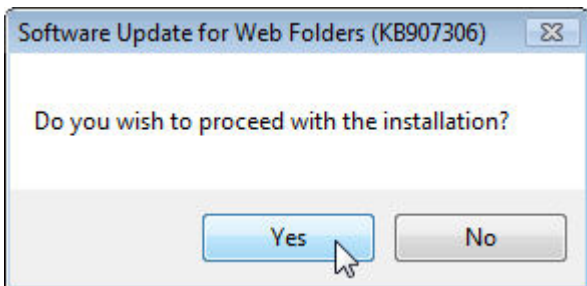
3. Select Run to install the update immediately or Save to save it on your machine to install later. (If you saved the update, double-click on it to proceed with the installation.)



4. When the following page appears you will need to agree by selecting the left-hand corner check box and clicking continue.

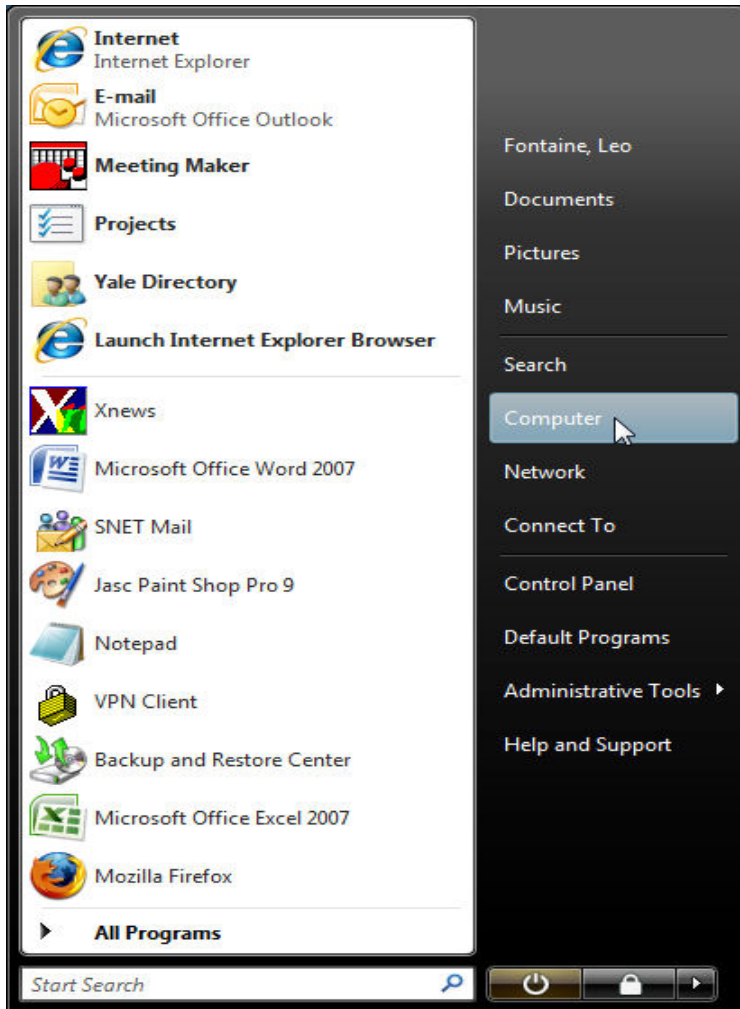


5. Hit Yes to proceed with installation. Once this is finished you will see a message "Installation is complete".

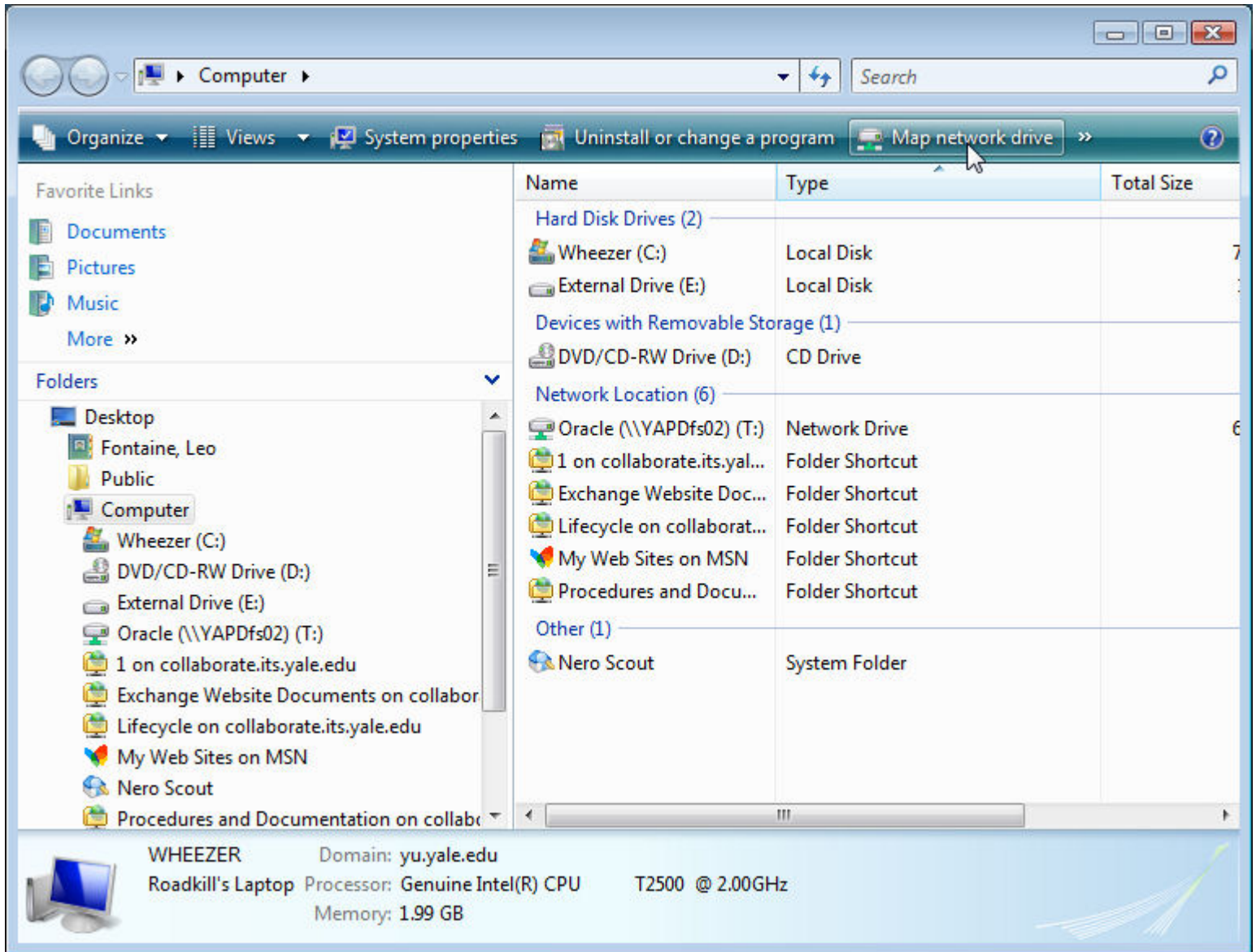


Setting up WebDAV

1. Select Computer from the Start icon:

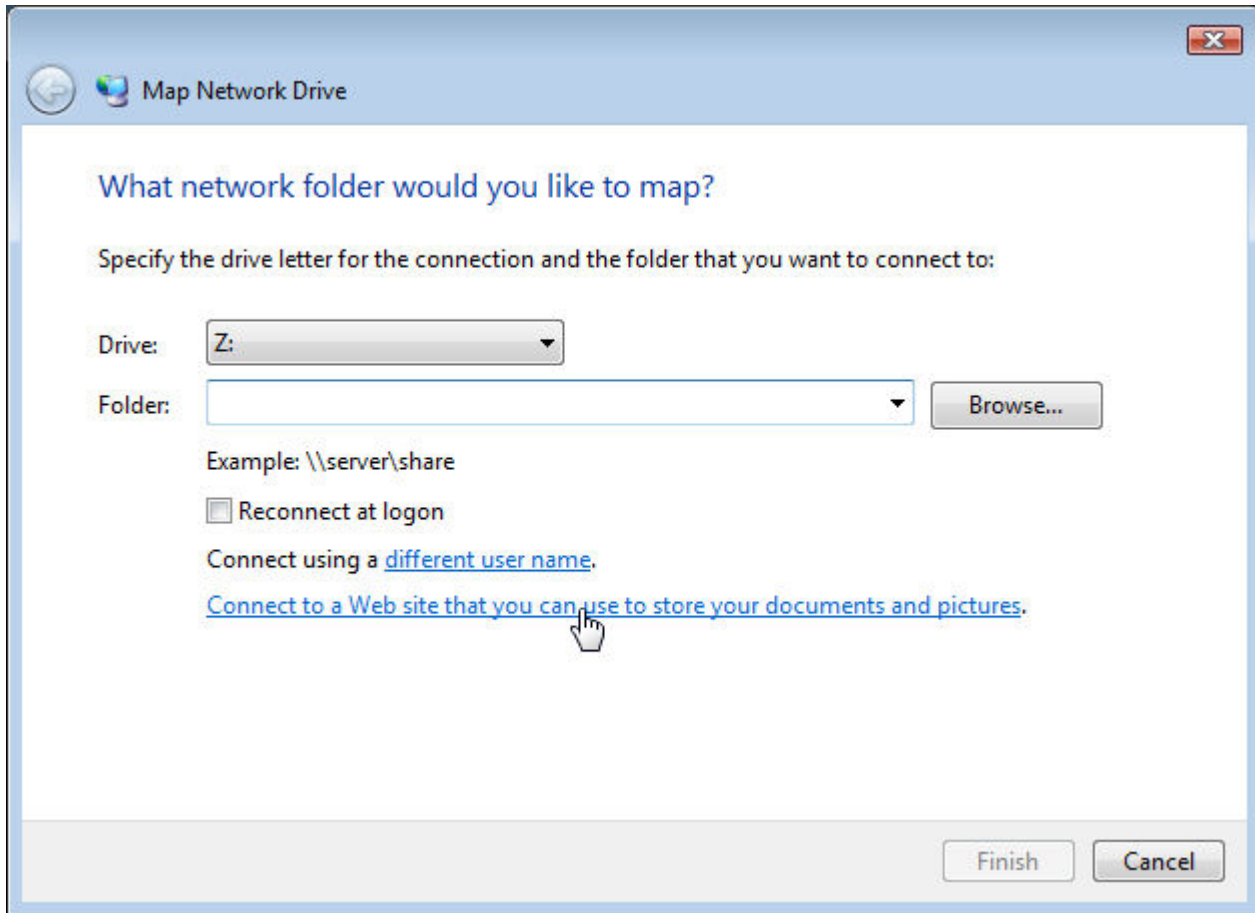


2. With Computer selected in the left panel, you see "Map network drive" in the tool bar. Click on "Map network drive".



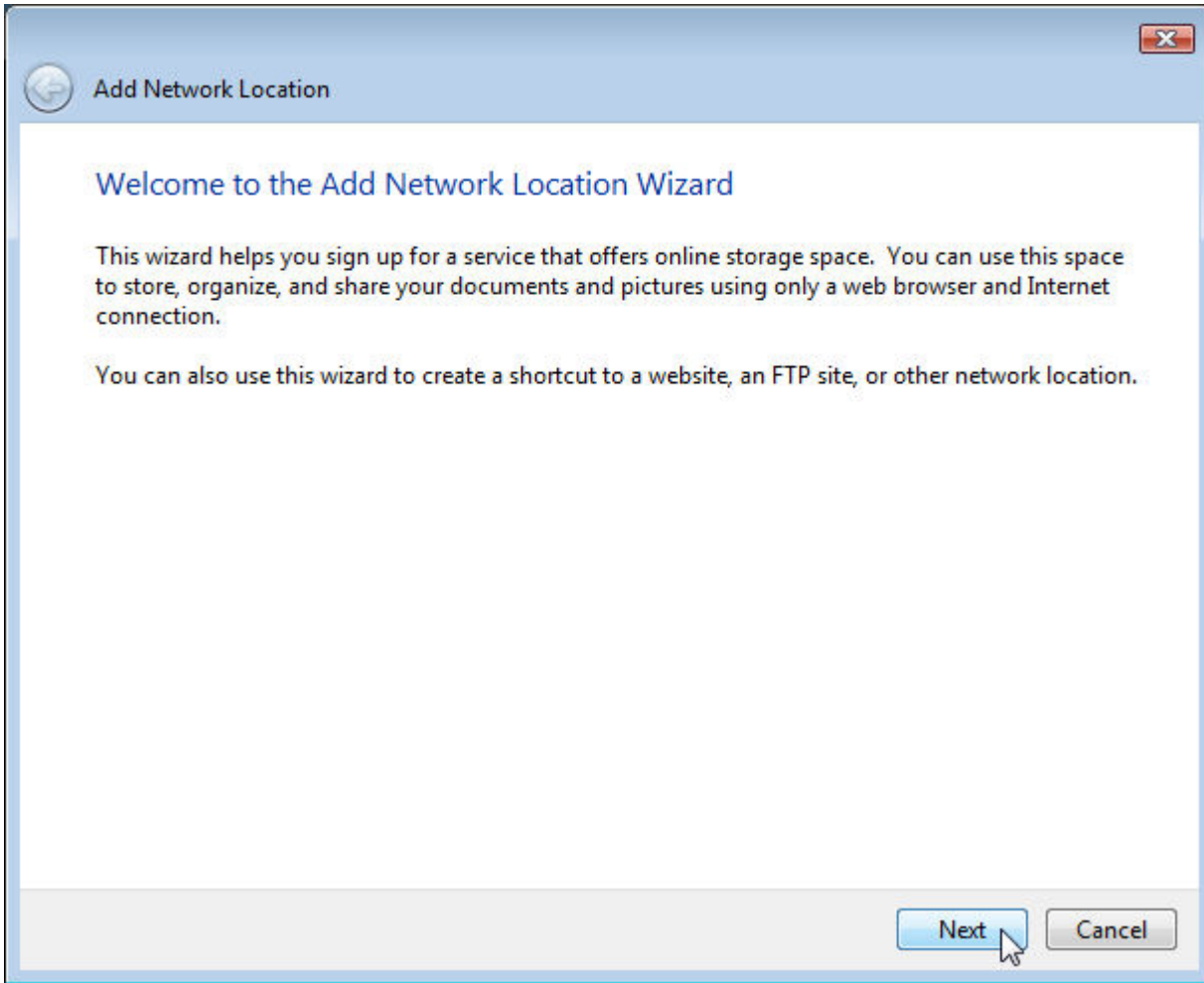


3. On the "Map Network Drive" dialog, click on the "Connect to a Web site that you can use to store your documents and pictures" link.



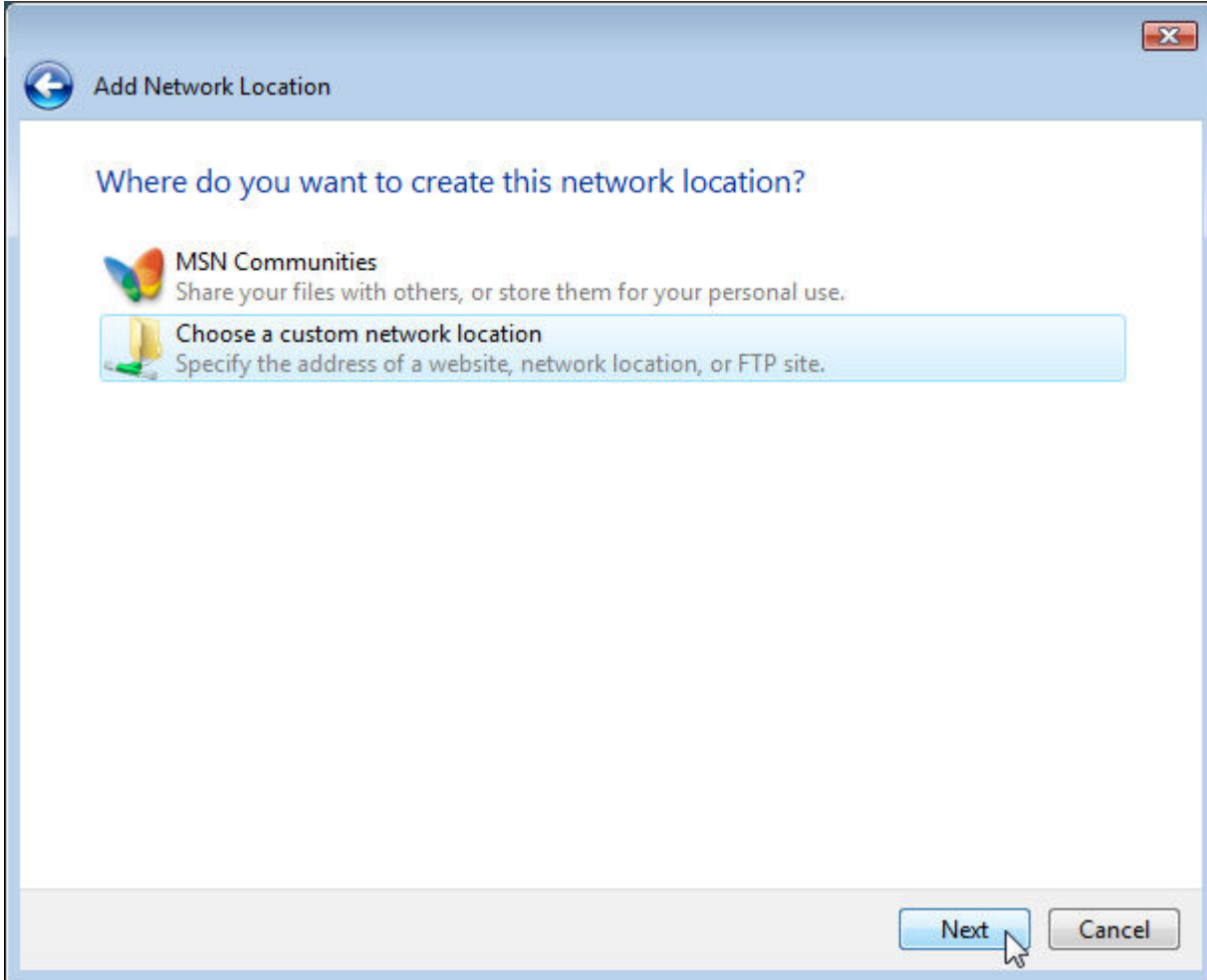


4. On the first of a series of "Add Network Location" dialogs, click Next.



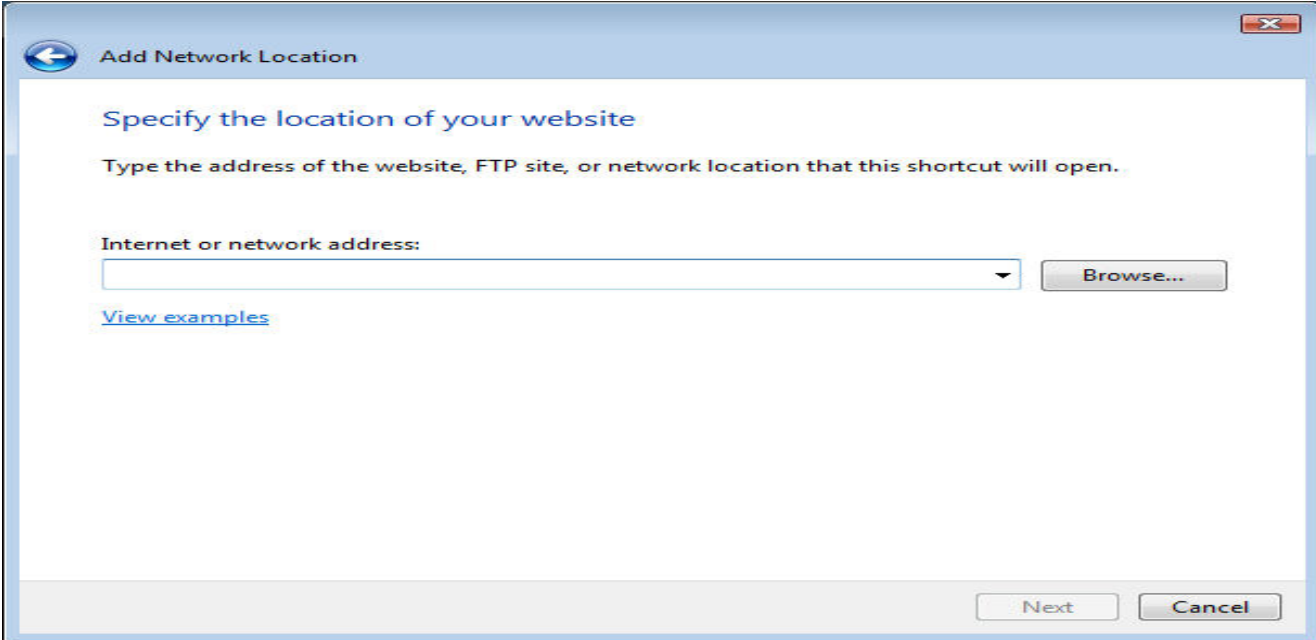


5. Select "Choose a custom network location." and click Next.

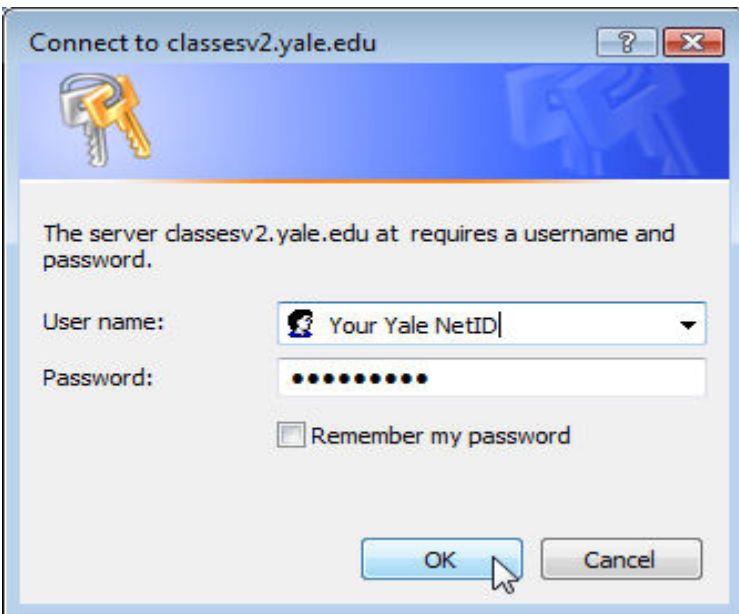




6. Enter the URL of the network address and click Next.



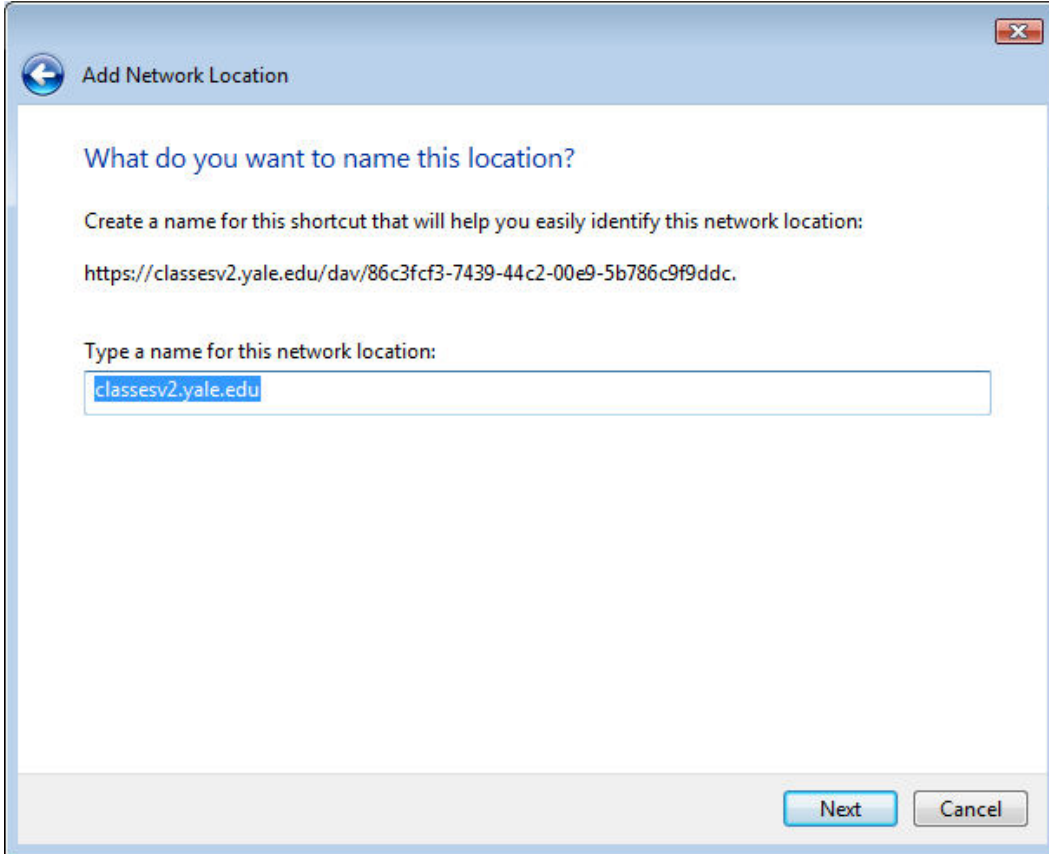
7. Enter the User name and Password you use to log on to Classes*v2 and access your course and click OK.



Note: To maintain course security, **do not** check "Remember my password."



8. Type a name for the network location. This is the name of the folder you will use to access your course files.





9. On the following screen make sure the box titled "Open this network location when I click Finish" is checked and click Finish.

